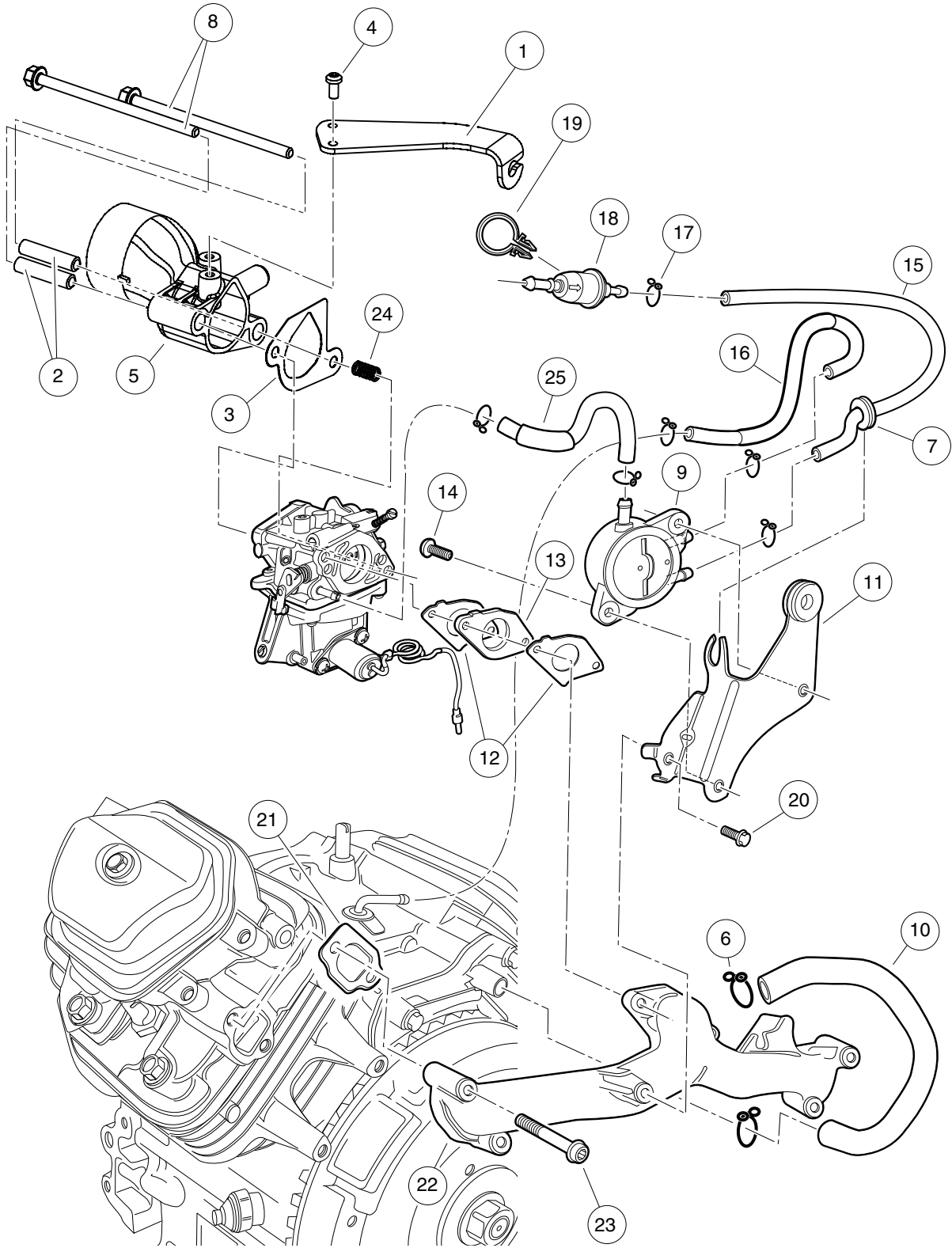


10

G

D



000021-001

CARBURETOR INSTALLATION – HONDA GASOLINE VEHICLES

ITEM	PART NO.	DESCRIPTION	QTY
		1 2 3 4	
1	N/A	Bracket, Choke Cable	1
2	102462601	Insert, Adapter, Carburetor	2
3	102493001	Gasket, Adapter, Carburetor	1
4	102617301	Screw Tapping, M5 X 0.8x10	2
5	102620801	Adapter, Intake Honda GX620	1
6	102656101	Clip, Breather Tube	1
7	N/A	Grommet, Reserve Tank	1
8	102656301	Bolt, Flange Head, M6 X 1 X 120	2
9	102656402	Pump Assy., Fuel, Sup	1
10	N/A	Tube, Breather	1
11	102656601	Stay, Fuel Pump	1
12	102656701	Gasket, Carburetor	2
13	102656801	Insulator, Carburetor	1
14	N/A	Srew-Washer, M6 X 16	2
15	N/A	Tube B, Fuel	1
16	102657101	Tube, Diaphragm	1
17	N/A	Clip, Tube, B10	3
18	102657301	Filter, Fuel	1
19	N/A	Clip, Wire Harness	1
20	102657501	Bolt, Flange Head, M6 X 11 X 4	2
21	102657601	Gasket, Intake Manifold	2
22	N/A	Manifold, Inlet	1
23	N/A	Bolt, Socket, M8 X 1.25 X 45	4
24	102710501	Spring, Continuity, Solenoid	1
25	102725401	Tube A, Fuel	1

10

G

D